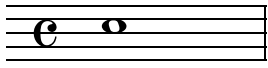


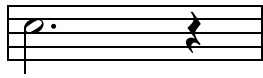
Rhythm Challenge Study Guide

whole note = 4 cts

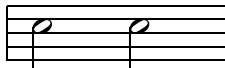


1,2,3,4

dotted half-note = 3 cts



half-note = 2 cts



1(2) 3(4)

quarter note = 1 ct



1 2 3 4

eight-note = 1/2 ct



1 & 2 & 3 & 4 &

eighth-note triplet = 1/3 ct



1 a le 2 a le 3 a le 4 a le

sixteenth-note = 1/4 ct



1 e & a 2 e & a 3 e & a 4 e & a



1(2) 3 4 1 2 & 3 4 1 2 3 & 4 1(2,3,4)



1 2 & 3 4 1 2 & 3 4 1 2 3 & 4 & 1(2,3,4)



1(2) & 1 2 & 1 2 1(2) & 1 2 1 & 2 & 1 2 1(2)



1(2) & 3 & 1 2 & 3 & a 1 2 3 1 & a 2 e & a 3



1 a 2 & 1 e & a 2 & 1 a 2 e & a 1(2)



1 2 3 4 a le 1 a 2 a 3 4 & a 1(2) & 3 4 a le 1 2 a 3(4)

